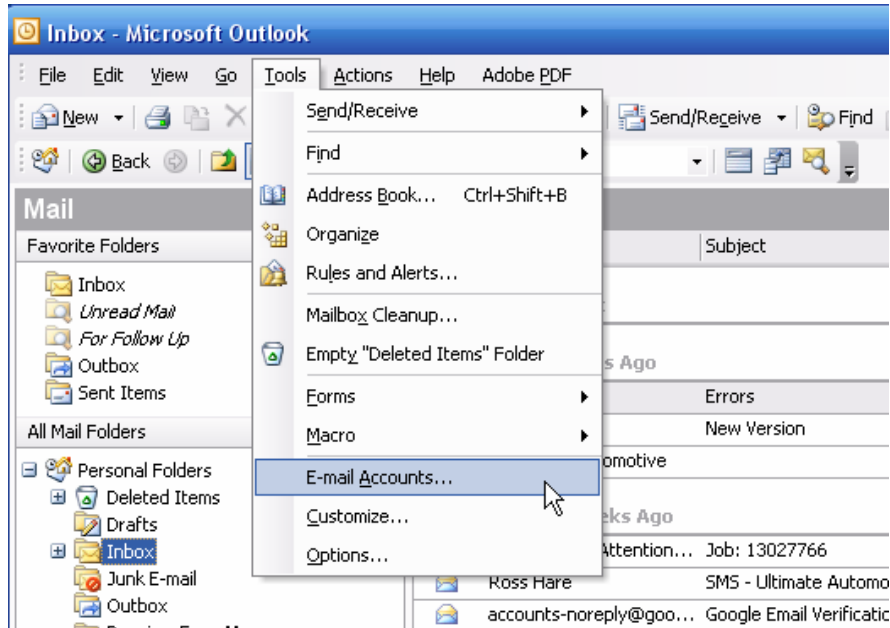


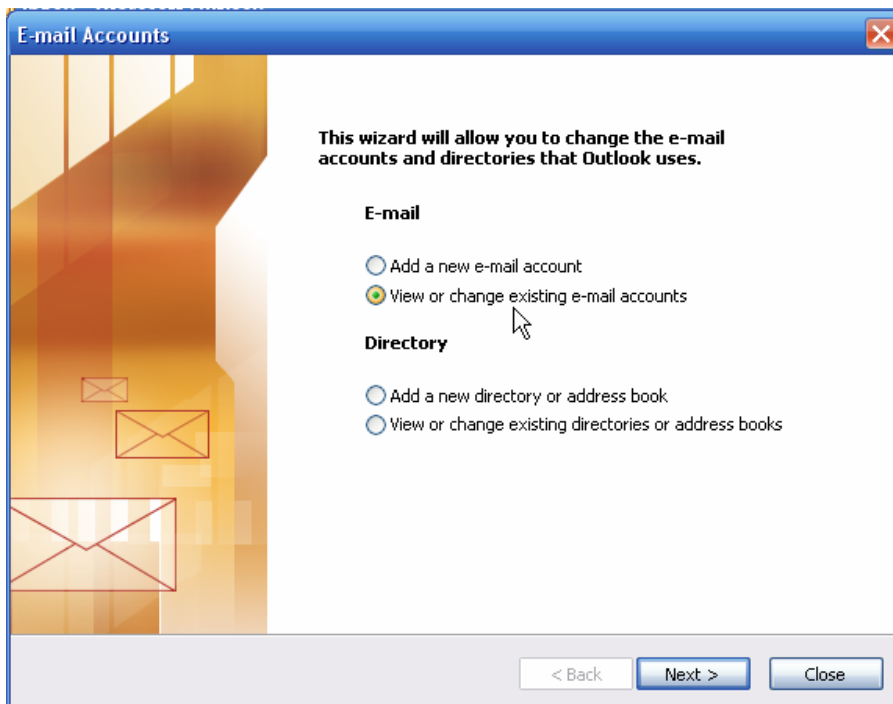
Location of SMTP setting in Microsoft Outlook

To access the Email functionality within Automation Premium there is a requirement to enter your email (Outgoing) SMTP setting into Automation Premium, please follow the instructions listed below.

1. Open Microsoft Outlook email browser.

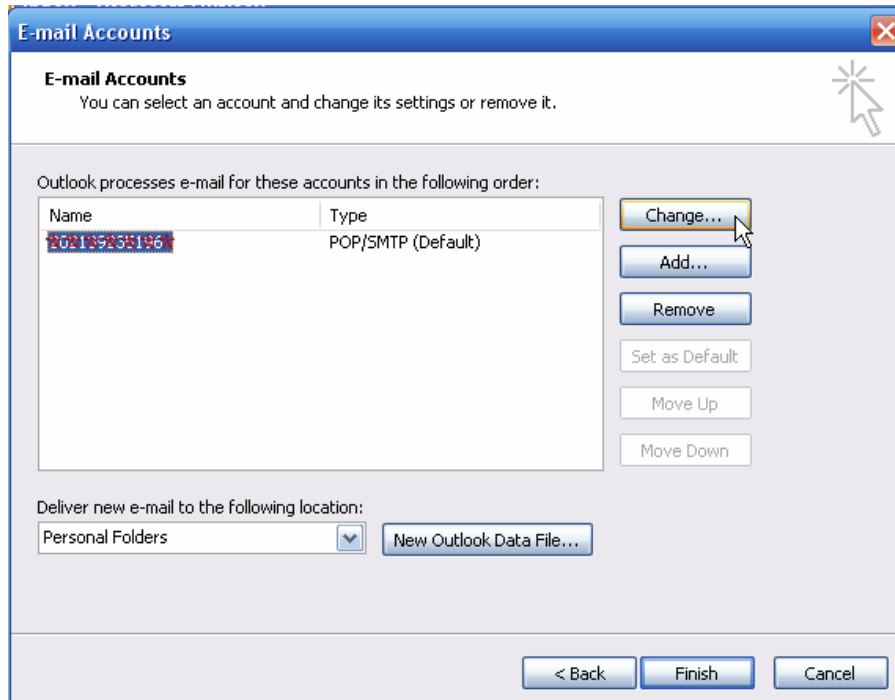


2. ▲ Click on Tools and E-mail Accounts.

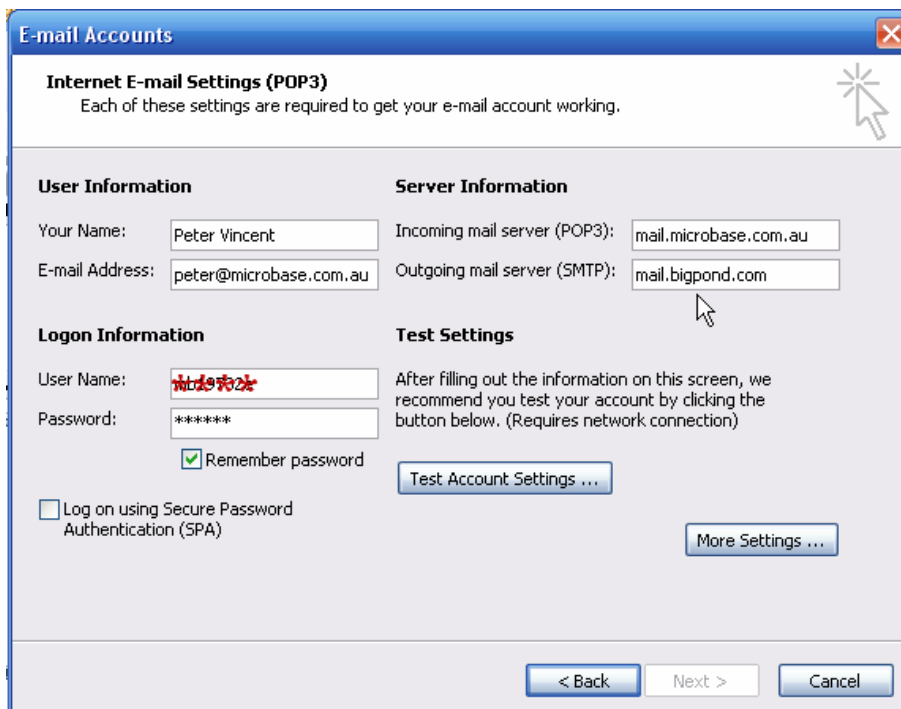


3. ▲ Confirm that View or change existing e-mail accounts is selected then click on Next.

Location of SMTP setting in Microsoft Outlook



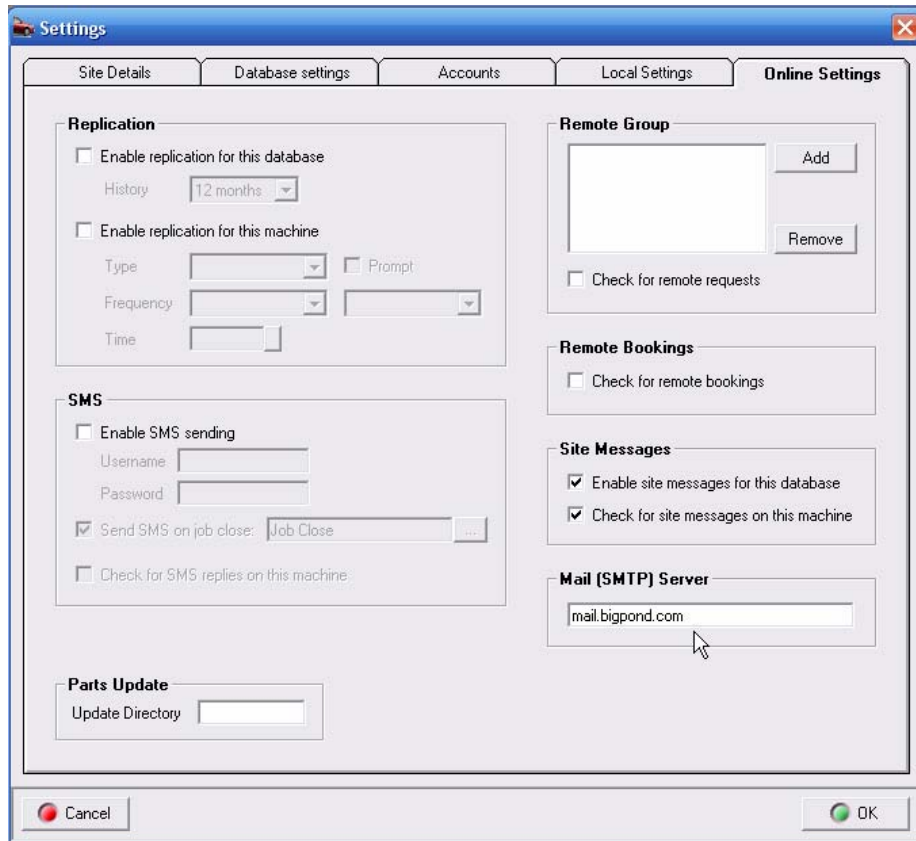
4. ▲ If you have more than one email account highlight the one you wish to use and then click on Change.



5. ▲ Either copy or write down the information in the Outgoing mail server SMTP field then click on Cancel and close all screens and close your email browser.

Location of SMTP setting in Microsoft Outlook

6. Open Automation Premium version 2.6.1b then click on File – Settings – Online Settings



7. ▲ Paste or write the information into the Mail (SMPT) Server field and then click on OK to save the information.